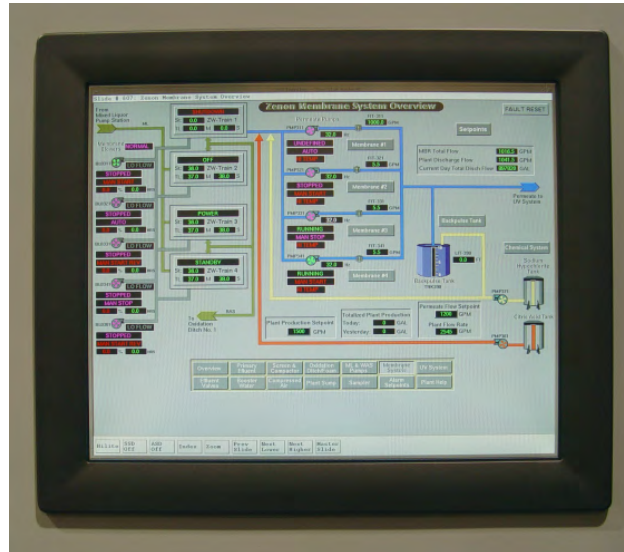


Key Features

- ◇ Unlimited Tag Count
- ◇ Fanless Cooling System
- ◇ 19" High Resolution Touchscreen TFT SXGA LCD
- ◇ Intel® Atom™ E3845 Quad Core Processor, 1.91 GHz
- ◇ Windows® 10 Support
- ◇ Compact Design with Die-Cast Al Alloy Front Bezel
- ◇ Downward I/O Cabling
- ◇ IP65 Compliant
- ◇ Gigabit Ethernet Support



The HSQ-TS19 functions equally well as a stand-alone Human Machine Interface in a remote location or as a networked extension of your MISER SCADA system on the plant floor. Each TS19 comes with MISER XView and the communication drivers for HSQ and MODBUS protocols and features an unlimited tag count. When the unit is configured as an RTU, you will have flexible integration, versatile deployment, local diagnostics, and configuration capabilities as well as historical data collection.

SPECIFICATIONS

General

- **Cooling System:** Fanless
- **Enclosure:**
 - Front Bezel:** Die-cast aluminum alloy
 - Back Housing:** ABS + PC
- **Mounting:** Panel mounting
- **OS Support:** Windows® 7 / Windows 10
- **Power Consumption:** 100 W (typical)
- **Power Input:** 9 – 32 VDC
- **Weight (Net):** 7.9 kg (17.3 lbs.)

System Hardware

- **CPU:** Intel Atom E3845, Quad Core Processor, 1.9 Ghz
- **Memory:** 4 GB SO-DIMM DDR3 SDRAM (Up to 8 GB)
- **LAN:** 2 x 10/100/1000Base-T ports
- **Storage:** Application dependent
- **I/O:** 4 x RS-232 (COM1, 3, 4, 5)
1 x USB 3.0 and 3 x USB 2.0 (host)
Keyboard, mouse
VGA
MIC-in, line-in, line-out

LCD Display

- **Display Type:** TFT LED Panel
- **Display Size:** 19"
- **Maximum Resolution:** 1280 x 1024
- **Maximum Colors:** 16.7 million
- **Contrast Ratio:** 1000:1
- **Viewing Angle (H, V°):** 85/80

Touchscreen

- **Durability:** Thirty-six million touches
- **Light Transmission:** 81 ±3%
- **Type:** 5-wire, analog resistive

Environment

- **Operating Temperature:** 0 – 50° C (32 – 122° F)
- **Storage Temperature:** -20 – 60° C (-4 – 140° F)
- **Humidity:** 10 – 95% RH (non-condensing)
- **Ingress Protection:** **Front panel:** IP65 compliant
- **Dimensions:** 458.2 x 384 x 67.3 mm (18 x 15 x 2.6 in.)

